

XBRL report vs. RDBMS



XBRL Network F2F Meeting, September 5th, 2011.

Banca d'Italia, Rome, Italy.

Ignacio Santos & Elena Castro



LABDA Group – Carlos III University of Madrid



Summary

Summary

Introduction

Architecture

Extraction of Metadata

Population

Queries & transformation

Conclusions

- # Introduction.
- # Architecture.
- # Extraction of Metadata.
- # Population.
- # Queries & transformation.
- # Conclusions.

Introduction

Summary

Introduction

Architecture

Extraction of Metadata

Population

Queries & transformation

Conclusions

- The XBRL reports entail that a large number of companies, economic and financial institutions have to spend a large amount of resources in Information Technology (IT).
- Mapping between XBRL data model and the Relational data model.
- Simplification of the XBRL language.
- As example, we use a XBRL instance document of FINREP 2012 draft (2011-06-12).

Architecture

Summary

Introduction

Architecture

Extraction of Metadata

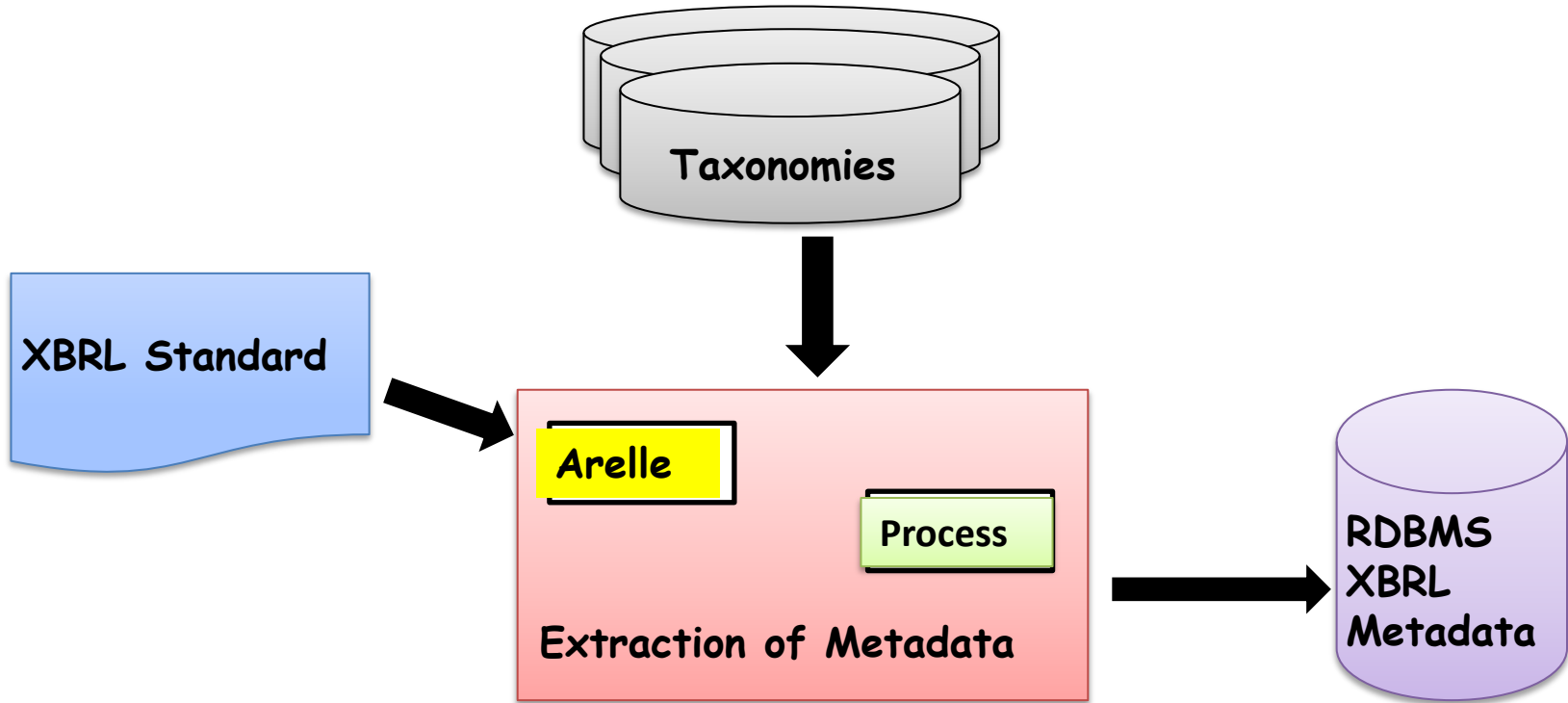
Population

Queries & transformation

Conclusions

- # Extraction of the metadata.
- # Population of the database.
- # PoC domain.
 - Arelle (core).
 - MS SQL Server 2008 R2.
 - Visual Basic Script.
 - Transact-SQL (T-SQL).
 - Excel.
 - Windows 7.

Extraction of Metadata



Extraction of Metadata

Summary

Introduction

Architecture

Extraction of Metadata

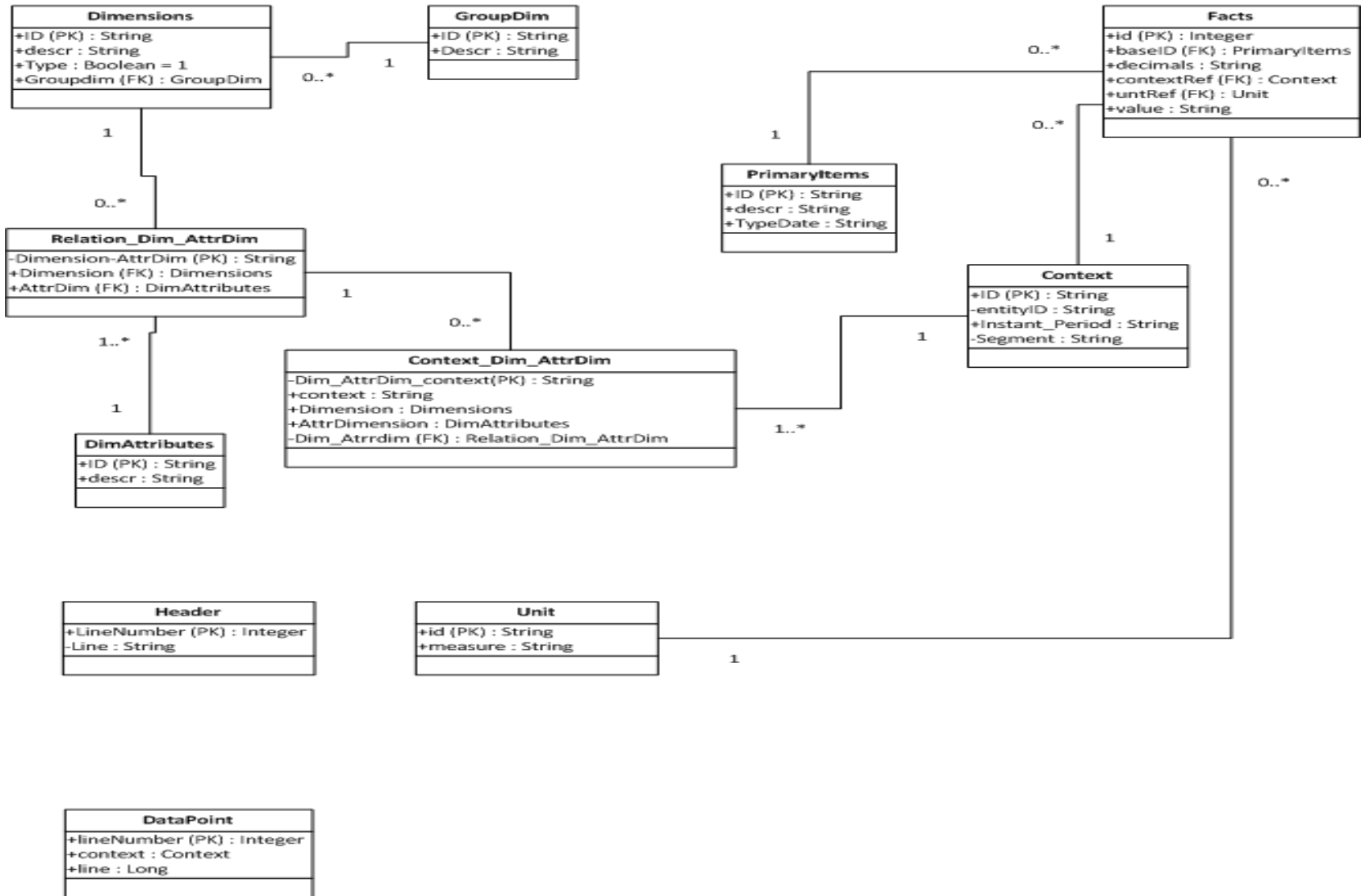
Population

Queries & transformation

Conclusions

- # Creation of the database.
- # Creation of the data model.
- # Load data model.
- # Queries.

UML Data Model of a Document Instance FINREP 2012.
 (XBRL proof of concept.
 Release, 2011-06-12).

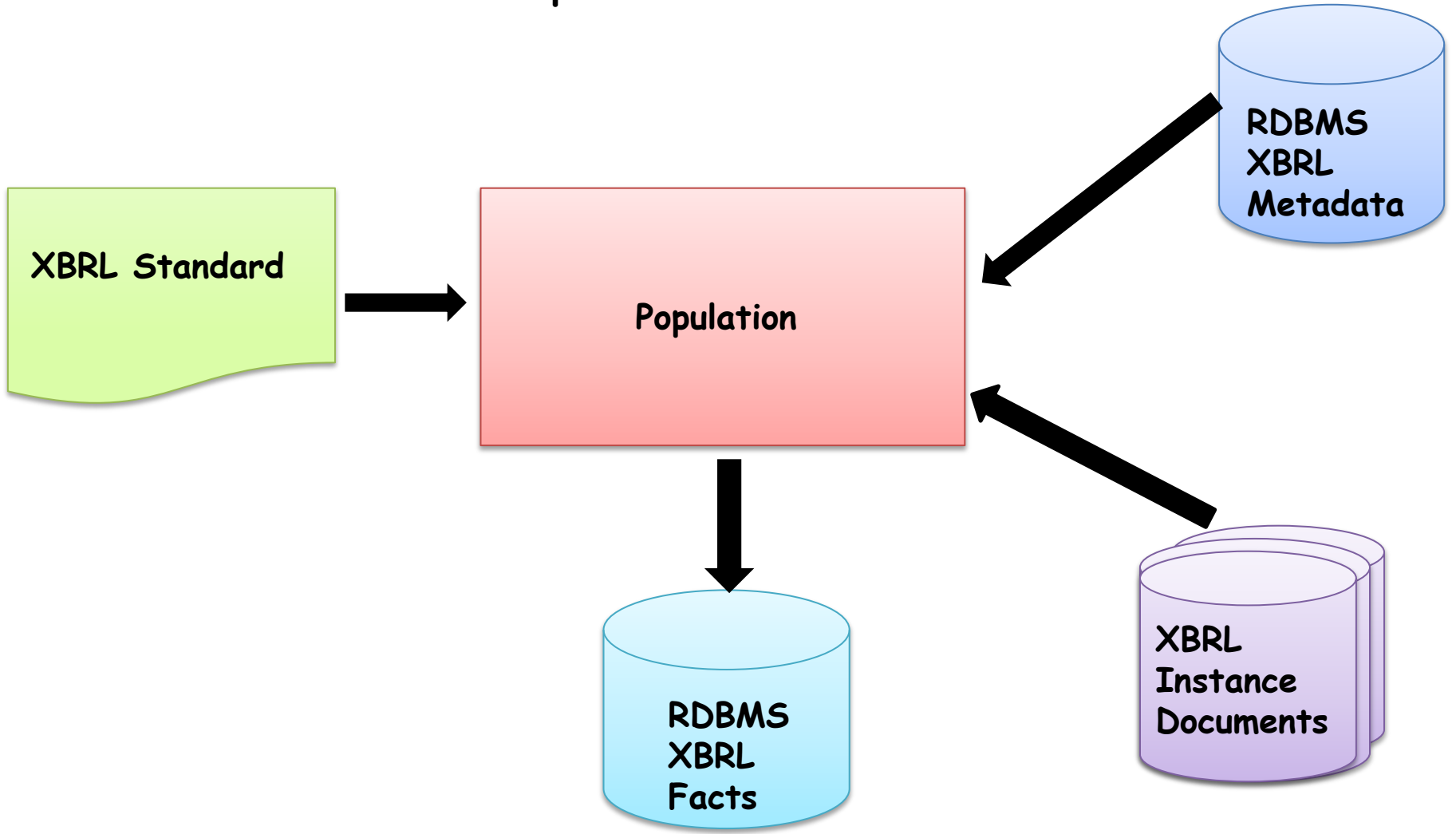


Extraction of Metadata

- Summary
- Introduction
- Architecture
- Extraction of Metadata
- Population
- Queries & transformation
- Conclusions

DEMO

Population of Database



Population of Database

- Summary
- Introduction
- Architecture
- Extraction of Metadata
- Population**
- Queries & transformation
- Conclusions

- # XBRL instance document.
- # Process of population.
- # Queries.

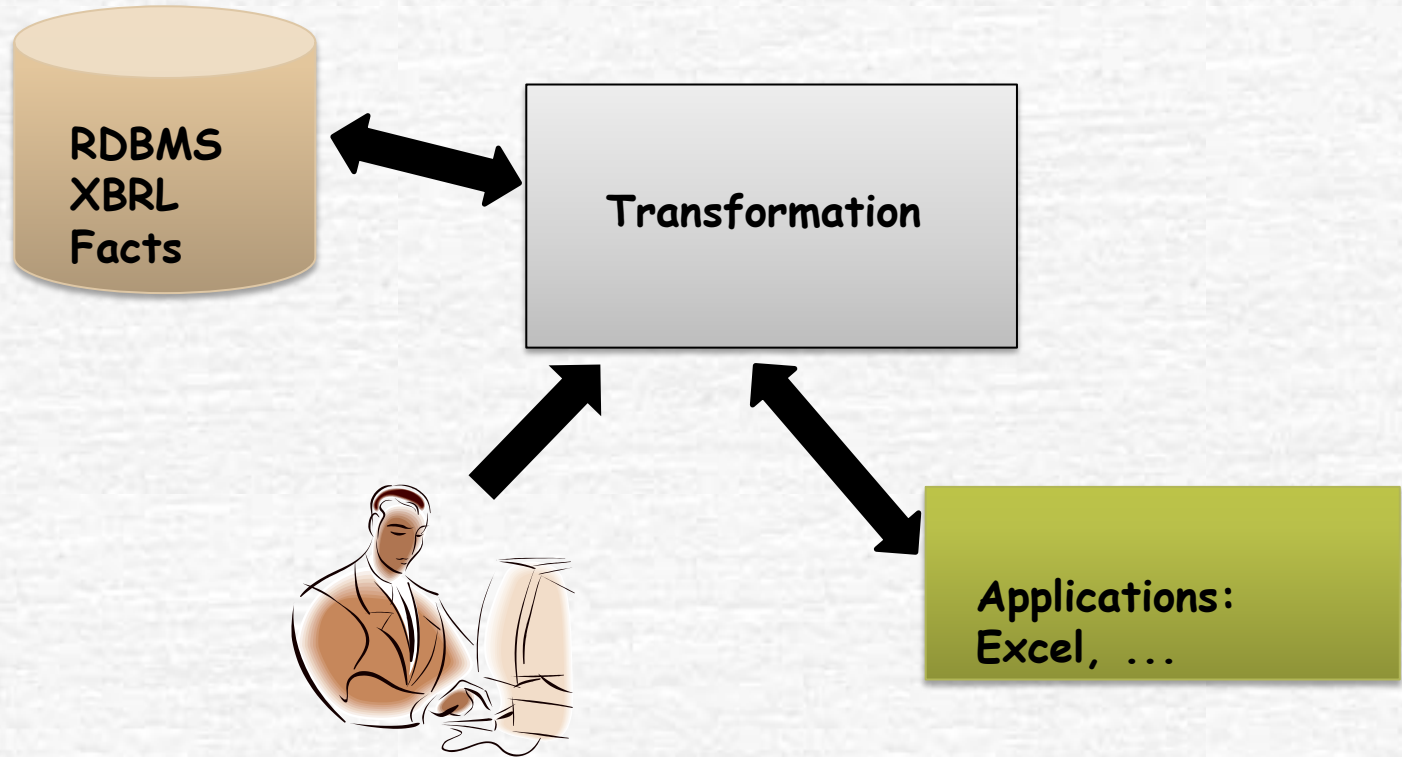
Population of Database

Summary
Introduction
Architecture
Extraction of Metadata
Population
Queries & transformation
Conclusions

DEMO

Queries and transformations

Summary
Introduction
Architecture
Extraction of Metadata
Population
Queries & transformation
Conclusions.



Queries & Transformation

- Summary
- Introduction
- Architecture
- Extraction of Metadata
- Population
- Queries & transformation
- Conclusions

- Transformation.
- Database → Excel
- Queries

Queries & Transformation

Summary
Introduction
Architecture
Extraction of Metadata
Population
Queries & transformation
Conclusions

DEMO

Conclusion

- Summary
- Introduction
- Architecture
- Extraction of Metadata
- Population
- Queries & transformation
- Conclusions

- General processes.
- Low cost.
- Easy transformation to other platforms.
- Future:
 - Any taxonomy.
 - Automatic generation of a map between XBRL data model and Relational Model.
 - N reports, N taxonomies.

XBRL report vs. RDBMS



Ignacio Santos, ignacio.santos@bde.es
Elena Castro, ecastro@inf.uc3m.es



LABDA Group – Carlos III University of Madrid

